

Where Your Council Tax Goes

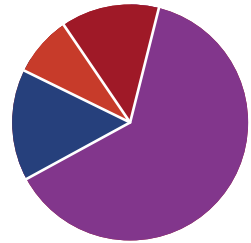
Northampton Borough Council is a billing authority which means that it collects council tax on behalf of all precepting authorities in the local area, including Northamptonshire County Council, the Northamptonshire Police and Fire & Rescue authorities and local Parish Councils.

Each precepting authority notifies Northampton Borough Council of their decisions on council tax and this gets added together to create one bill for the residents of Northampton.

The share of council tax collected from residents is then distributed to the precepting authorities based on the demand made by the authorities when setting their budget.

Share of Council Tax for 2020 -2021

	Amount £	Amount %
Northamptonshire County Council	89,177,668	70.02
Northamptonshire Police and Crime Commissioner	17,693,726	13.91
Northamptonshire Commissioner Fire and Rescue Authority	4,299,248	3.38
Northampton Borough Council	16,014,582	12.59
Total	127,185,224	



Prior to 2018-19

Before the 2018/19 financial year, the Fire and Rescue service sat within Northamptonshire County Councils governance arrangements. Therefore funding for the Fire and Rescue service was included in Northamptonshire County Councils council tax amount.

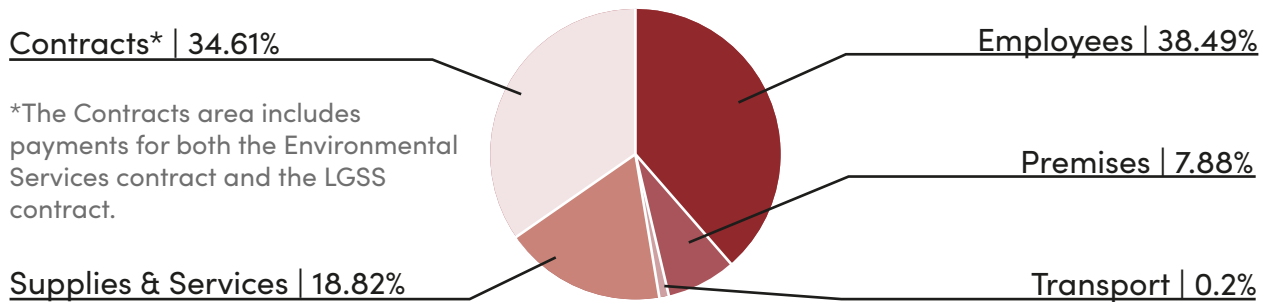
After 1st January 2019, the governance of the Fire & Rescue Service passed from Northamptonshire County Council to the Police and Crime Commissioner which resulted in the Fire & Rescue authority being set up separately to that of Northamptonshire County Council.

This is why in 2016/17, Northamptonshire Commissioner Fire and Rescue Authority has a zero percentage attributed to it because it didn't exist as a separate entity.

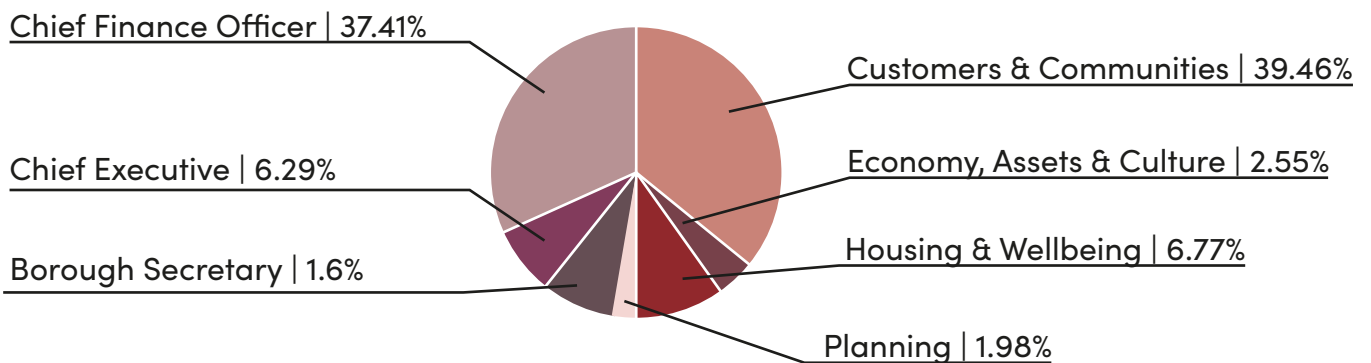
Council Tax Percentage Split

	2016/17	2020/21
Northamptonshire County Council	72.91%	70.12%
Northamptonshire Police and Crime Commissioner	13.45%	13.91%
Northamptonshire Commissioner Fire and Rescue Authority	0.00%	3.38%
Northampton Borough Council	13.64%	12.59%

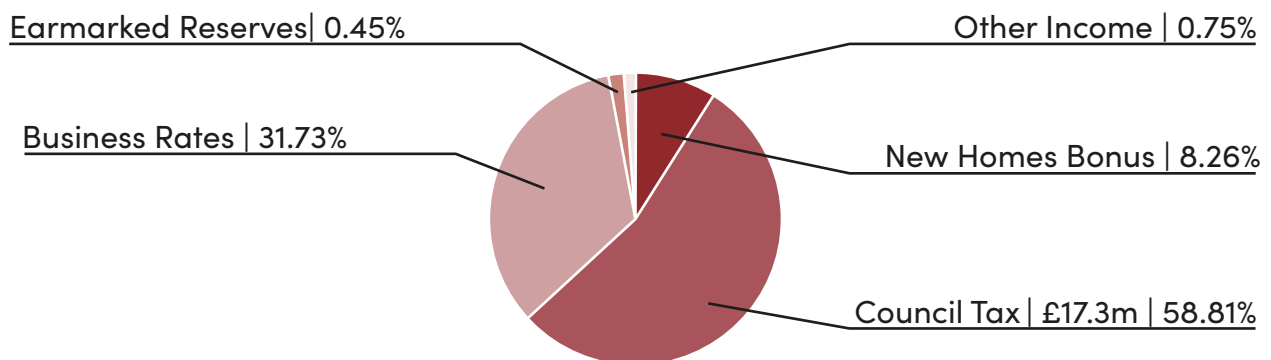
Spent On



Spent By



Funded By



Where £1 of your council tax goes*

Collecting waste & recycling	0.20
Housing & Homelessness	0.10
Community & Culture	0.15
Parks & Open Spaces	0.10
Revenue & Benefits	0.10
Regeneration, Enterprise and Property Maintenance	0.15
Enabling Services	0.20

*This is for illustrative purposes only